



# Ball nose End Mill

**BREAKING NEWS**  
HYP-SB-EBD



Long cutting edge

$X > Y$

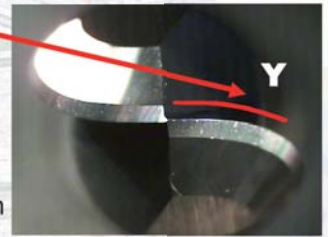
- Less torque
- Less heat build-up
- Better surface finish
- Long tool life

**HY-PRO** HYP-SB-EBD Geometry

Short cutting edge

$X > Y$

- Normal torque
- Normal heat build-up
- Average surface finish
- Standard tool life



Standard Geometry

**BREAKING NEWS**  
HYP-HS-CRE



The cutting edge is supported by maximum mass of carbide without jeopardizing smooth chipflow.





**NEW**

**HIGH PERFORMANCE**

- 2 flutes
- Center cutting

**HIGH PERFORMANCE**

- 2 Schneiden
- Zentrumschneidend

**ALTA PRESTAZIONE**

- 2 denti
- Taglio al centro

**HAUTE PERFORMANCE**

- 2 lèvres
- Coupe au centre

**HIGH PERFORMANCE**

- 2 skær
- Borende

**HIGH PERFORMANCE**

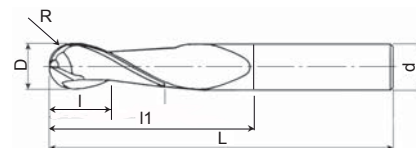
- 2 skär
- Borrande

**ALTO RENDIMENTO**

- 2 labios
- Corte central

**ВЫСОКАЯ ПРОИЗВОДИТЕЛЬНОСТЬ**

- 2 режущих кромки
- Режущий центр



EDP	D	R	L	l	I1	d	Z	Stock	Price
<b>NEW</b> 48350030	3	1,5	57	4,0	9,0	6	2	●	
<b>NEW</b> 48350040	4	2,0	57	5,0	12,0	6	2	●	
<b>NEW</b> 48350050	5	2,5	57	6,0	15,0	6	2	●	
<b>NEW</b> 48350060	6	3,0	57	7,0	18,0	6	2	●	
<b>NEW</b> 48350080	8	4,0	63	9,0	24,0	8	2	●	
<b>NEW</b> 48350100	10	5,0	72	11,0	30,0	10	2	●	
<b>NEW</b> 48351200	12	6,0	83	13,0	36,0	12	2	●	



**NEW**

**HYPRO**

- 4 flutes
- Corner radius

**HYPRO**

- 4 Schneiden
- Mehrschneider mit Eckenradius

**HYPRO**

- 4 denti
- Frese toriche

**HYPRO**

- 4 lèvres
- Fraise à rayon

**HYPRO**

- 4 skær
- hjørneradius

**HYPRO**

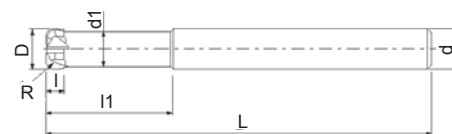
- 4 skär
- Hömradius

**HYPRO**

- 4 labio
- Vertice radio

**HYPRO**

- 4 режущих кромки
- Концевые фрезы с радиусом



EDP	D	R	L	l1	l	d1	d	Z	Stock	Price
<b>NEW</b> 48340060	6	1,5	57	24	2,5	5,0	6	4	●	
<b>NEW</b> 48340080	8	2,0	63	32	3,5	7,0	8	4	●	
<b>NEW</b> 48340100	10	2,0	72	40	4,0	9,0	10	4	●	
<b>NEW</b> 48340120	12	3,0	83	48	5,0	11,0	12	4	●	

Applications - Anwendungen - Applicazioni - Applications - Applikation - Applikation - Aplicaciones - Применение

-40 HRC	-45 HRC	-55 HRC	-60 HRC	-65 HRC	SUS -35 HRC	GG-GGG -350 HB
◎	◎	◎	◎	○		◎
Cu	Al	Graphite	Ti	HRS	Plast.	